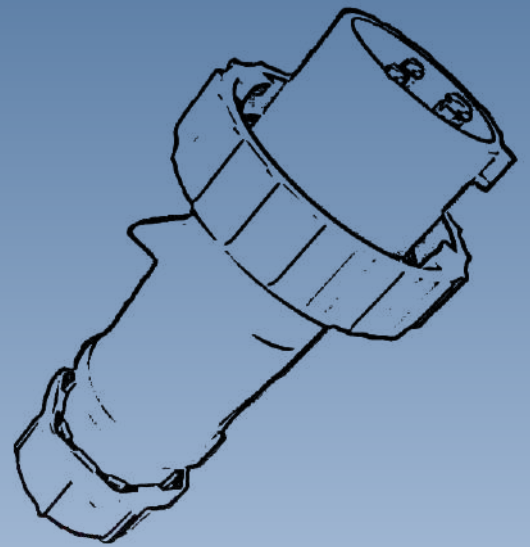


# Electron

INDUSTRIAL PLUG AND SOCKET

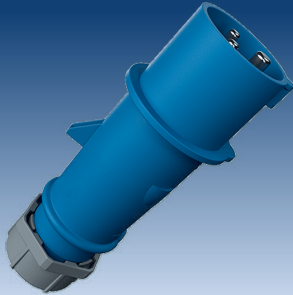


**MADE IN INDIA**

[www.holard.in](http://www.holard.in)

## PLUG

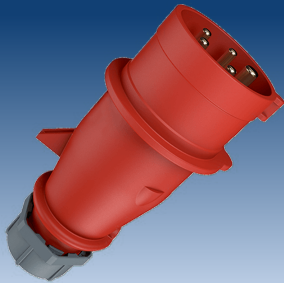
IP 44



- ▶ Current : 16 Amps
- ▶ Poles : 2P + E
- ▶ Voltage : 220 - 240V
- ▶ Screw terminals
- ▶ Cable gland
- ▶ Protection Degree IP44  
Splash Proof

Product Code	MRP (₹)
013X	165

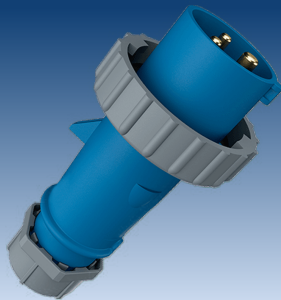
IP 44



- ▶ Current : 32 Amps
- ▶ Poles : 3P+N+E
- ▶ Voltage : 380 - 440V
- ▶ Screw terminals
- ▶ Cable gland
- ▶ Protection Degree IP44  
Splash Proof

Product Code	MRP (₹)
025X	390

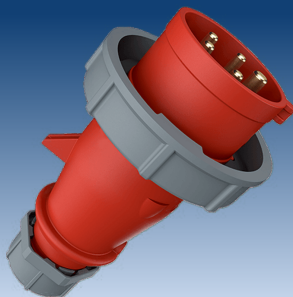
IP 67



- ▶ Current : 16 Amps
- ▶ Poles : 2P + E
- ▶ Voltage : 220 - 240V
- ▶ Screw terminals
- ▶ Cable gland
- ▶ Protection Degree IP67  
Water Tight

Product Code	MRP (₹)
0132	185

IP 67



- ▶ Current : 32 Amps
- ▶ Poles : 3P+N+E
- ▶ Voltage : 380 - 440V
- ▶ Screw terminals
- ▶ Cable gland
- ▶ Protection Degree IP67  
Water Tight

Product Code	MRP (₹)
0252	435

# Elecron

## CONNECTOR

IP 44



- ▶ Current : 16 Amps
- ▶ Poles : 2P + E
- ▶ Voltage : 220 - 240V
- ▶ Screw terminals
- ▶ Cable gland
- ▶ Protection Degree IP44  
Splash Proof

Product Code	MRP (₹)
213X	210

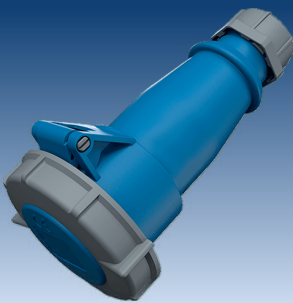
IP 44



- ▶ Current : 32 Amps
- ▶ Poles : 3P+N+E
- ▶ Voltage : 380 - 440V
- ▶ Screw terminals
- ▶ Cable gland
- ▶ Protection Degree IP44  
Splash Proof

Product Code	MRP (₹)
225X	440

IP 67



- ▶ Current : 16 Amps
- ▶ Poles : 2P + E
- ▶ Voltage : 220 - 240V
- ▶ Screw terminals
- ▶ Cable gland
- ▶ Protection Degree IP67  
Water Tight

Product Code	MRP (₹)
2132	235

IP 67



- ▶ Current : 32 Amps
- ▶ Poles : 3P+N+E
- ▶ Voltage : 380 - 440V
- ▶ Screw terminals
- ▶ Cable gland
- ▶ Protection Degree IP67  
Water Tight

Product Code	MRP (₹)
2252	485

MADE IN INDIA

[www.holard.in](http://www.holard.in)

## PANEL MOUNTING STRAIGHT SOCKET

IP 44



- ▶ Current : 16 Amps
- ▶ Poles : 2P + E
- ▶ Voltage : 220 - 240V
- ▶ Screw terminals
- ▶ Straight
- ▶ Protection Degree IP44  
Splash Proof

Product Code	MRP (₹)
313X	190

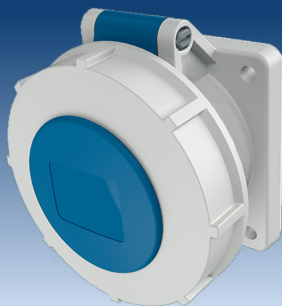
IP 44



- ▶ Current : 32 Amps
- ▶ Poles : 3P+N+E
- ▶ Voltage : 380 - 440V
- ▶ Screw terminals
- ▶ Straight
- ▶ Protection Degree IP44  
Splash Proof

Product Code	MRP (₹)
325X	425

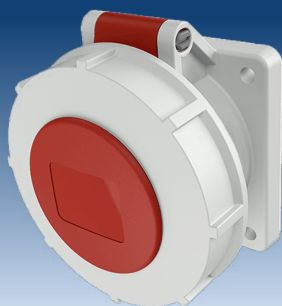
IP 67



- ▶ Current : 16 Amps
- ▶ Poles : 2P + E
- ▶ Voltage : 220 - 240V
- ▶ Screw terminals
- ▶ Straight
- ▶ Protection Degree IP44  
Water Tight

Product Code	MRP (₹)
3132	215

IP 67



- ▶ Current : 32 Amps
- ▶ Poles : 3P+N+E
- ▶ Voltage : 380 - 440V
- ▶ Screw terminals
- ▶ Straight
- ▶ Protection Degree IP67  
Water Tight

Product Code	MRP (₹)
3252	465

## PANEL MOUNTING ANGLED SOCKET

IP 44



- ▶ Current : 16 Amps
- ▶ Poles : 2P + E
- ▶ Voltage : 220 - 240V
- ▶ Screw terminals
- ▶ Angled 20°
- ▶ Protection Degree IP44  
Splash Proof

Product Code	MRP (₹)
413X	200

IP 44



- ▶ Current : 32 Amps
- ▶ Poles : 3P+N+E
- ▶ Voltage : 380 - 440V
- ▶ Screw terminals
- ▶ Angled 20°
- ▶ Protection Degree IP44  
Splash Proof

Product Code	MRP (₹)
425X	435

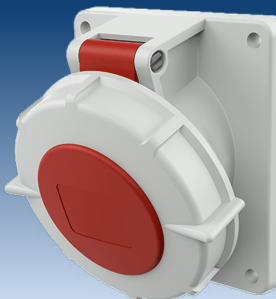
IP 67



- ▶ Current : 16 Amps
- ▶ Poles : 2P + E
- ▶ Voltage : 220 - 240V
- ▶ Screw terminals
- ▶ Angled 20°
- ▶ Protection Degree IP67  
Water Tight
















Product Code	MRP (₹)
4132	225

IP 67

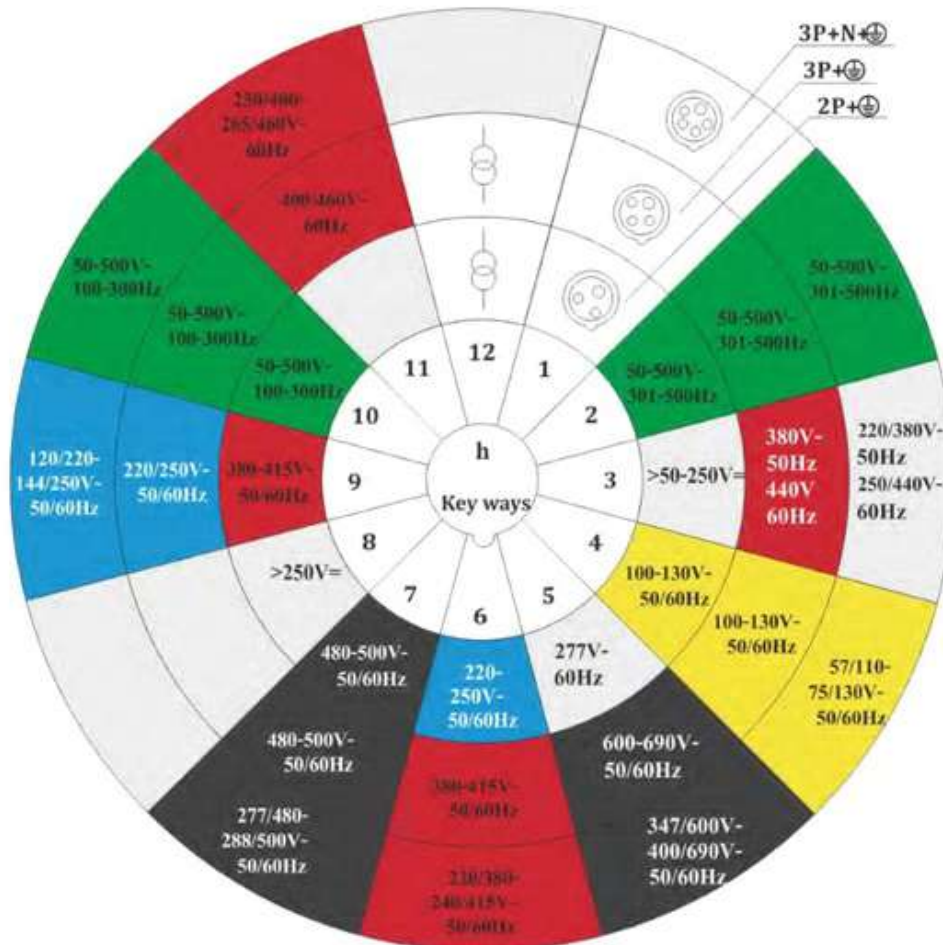


- ▶ Current : 32 Amps
- ▶ Poles : 3P+N+E
- ▶ Voltage : 380 - 440V
- ▶ Screw terminals
- ▶ Angled 20°
- ▶ Protection Degree IP67  
Water Tight

Product Code	MRP (₹)
4252	475

INGRESS PROTECTION TABLE	IP (Ingress Protection) Ratings Guide	
	SOLIDS	WATER
1	 <p>Protected against a solid object greater than 50mm such as a hand</p>	 <p>Protected against vertically falling drops of water. Limited ingress permitted</p>
2	 <p>Protected against a solid object greater than 12.5mm such as a finger</p>	 <p>Protected against vertically falling drops of water with enclosure tilted up to 15 degrees from the vertical. Limited ingress permitted</p>
3	 <p>Protected against a solid object greater than 2.5mm such as a screwdriver</p>	 <p>Protected against sprays of water up to 60 degrees from the vertical. Limited ingress permitted for three minutes.</p>
4	 <p>Protected against a solid object greater than 1mm such as a wire</p>	 <p>Protected against water splashed from all directions. Limited ingress permitted.</p>
5	 <p>Dust Protected. Limited ingress of dust permitted. Will not interfere with operation of the equipment. Two to eight hours</p>	 <p>Protected against jets of water. Limited ingress permitted.</p>
6	 <p>Dust tight. No ingress of dust. Two to eight hours.</p>	 <p>Water from heavy seas or water projected in powerful jets shall not enter the enclosure in harmful quantities.</p>
Rating Example		
		 <p>Protection against the effects of immersion in water between 15 cm and 1 m for 30 minutes.</p>
		 <p>Protection against the effects of immersion in water under pressure for long periods.</p>

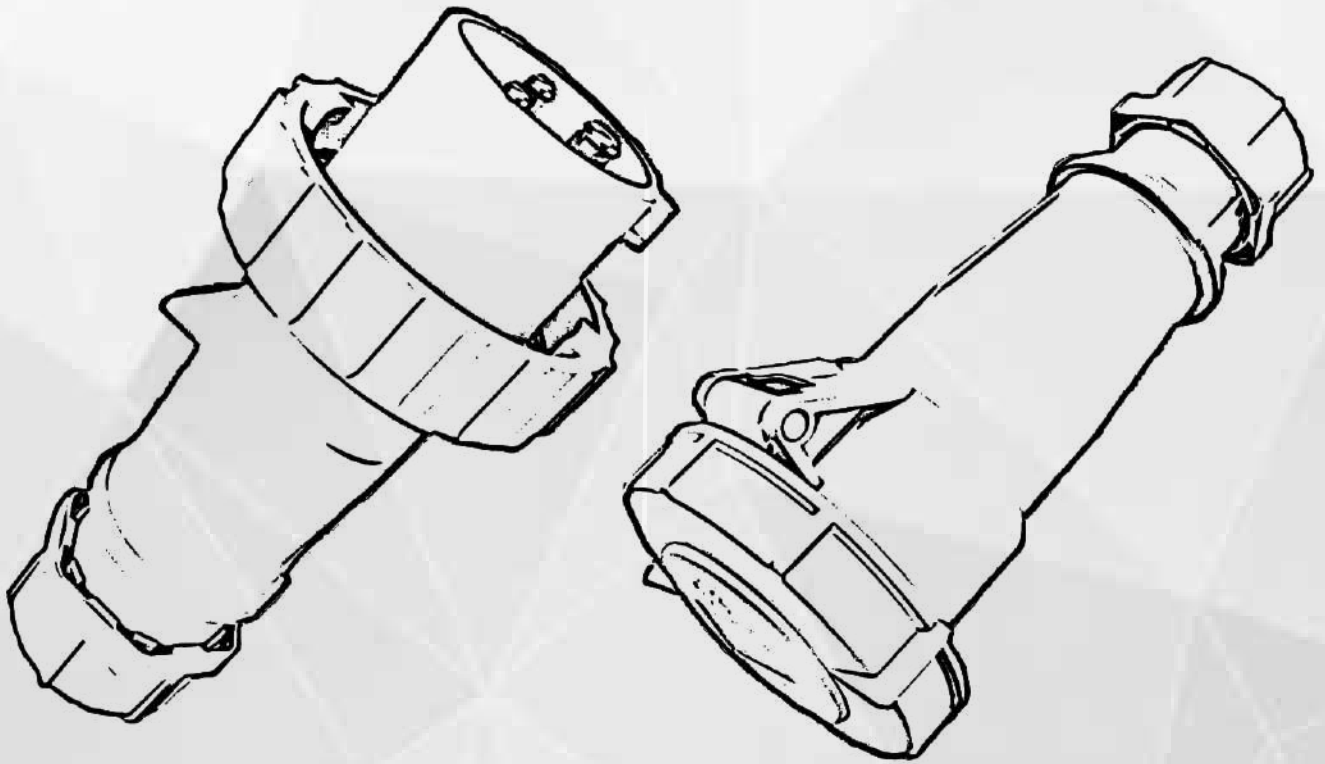
## IEC 60309 Clock Diagram for Industrial Plugs and Receptables



The International Standard IEC 60309 specifies for physical attributes and markings such as Current, Voltage, Frequency distinguished by different diameters of the circular housing along with exact colour coding. The locations of Earthing position has been derived in one of twelve spaced at 30° intervals. The various positions are referenced from the open side view of the socket (or connector/receptacle); the 6 o'clock (180°) position is at the angle as the keyway.

### COLOUR CODING

VOLTAGE or FREQUENCY	COLOUR CODED IN COMPLIANCE with IEC Standards
20 Volts to 25 Volts [24 Volts]	VIOLET
40 Volts to 50 Volts [42 Volts]	WHITE
100 Volts to 130 Volts [110 Volts]	YELLOW
200 Volts to 250 Volts [240 Volts]	BLUE
380 Volts to 480 Volts [415 Volts]	RED
500 Volts to 690 Volts [500 Volts]	BLACK
60Hz to 500Hz	GREEN



# **Elecron**

**DIVINE ENTERPRISE**

36, Devraj Industrial Estate, Bakrol Bujrang, Bakrol, Ahmedabad - 382430  
E-mail : [info@holard.in](mailto:info@holard.in), Ph. +91 8238548215, 9925595820

**[www.holard.in](http://www.holard.in)**

**MADE IN INDIA**